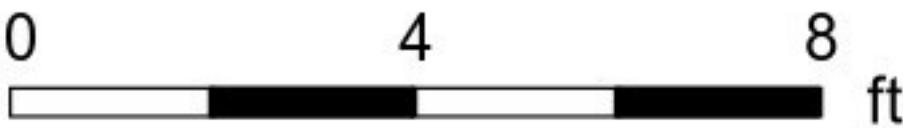
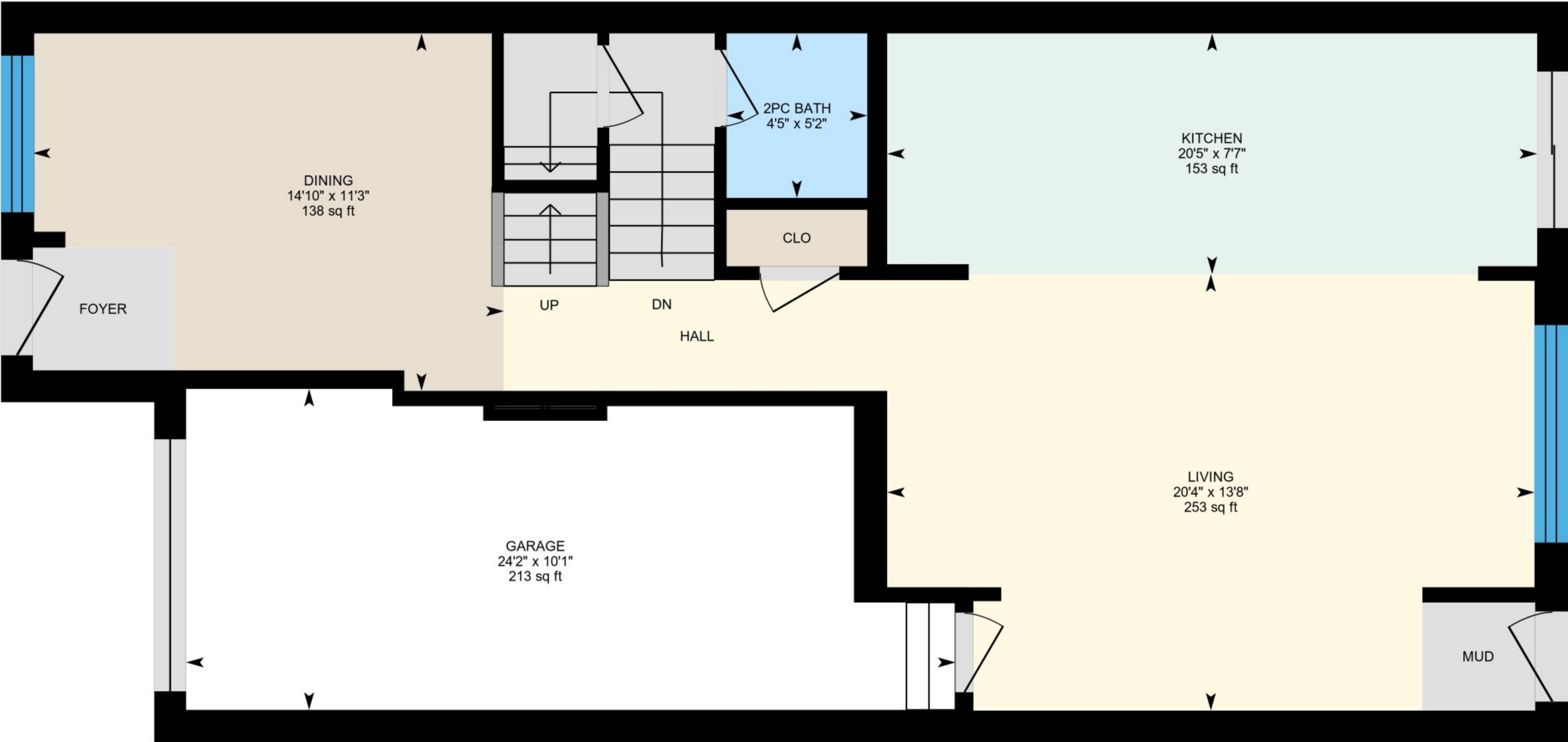


1456 Haws Crescent, Milton, ON

Main Floor Finished Area 840.98 sq ft
Unfinished Area 249.87 sq ft



PREPARED: 2025/05/07



White regions are excluded from total floor area in iGUIDE floor plans. All room dimensions and floor areas must be considered approximate and are subject to independent verification.

1456 Haws Crescent, Milton, ON

2nd Floor Finished Area 1029.68 sq ft



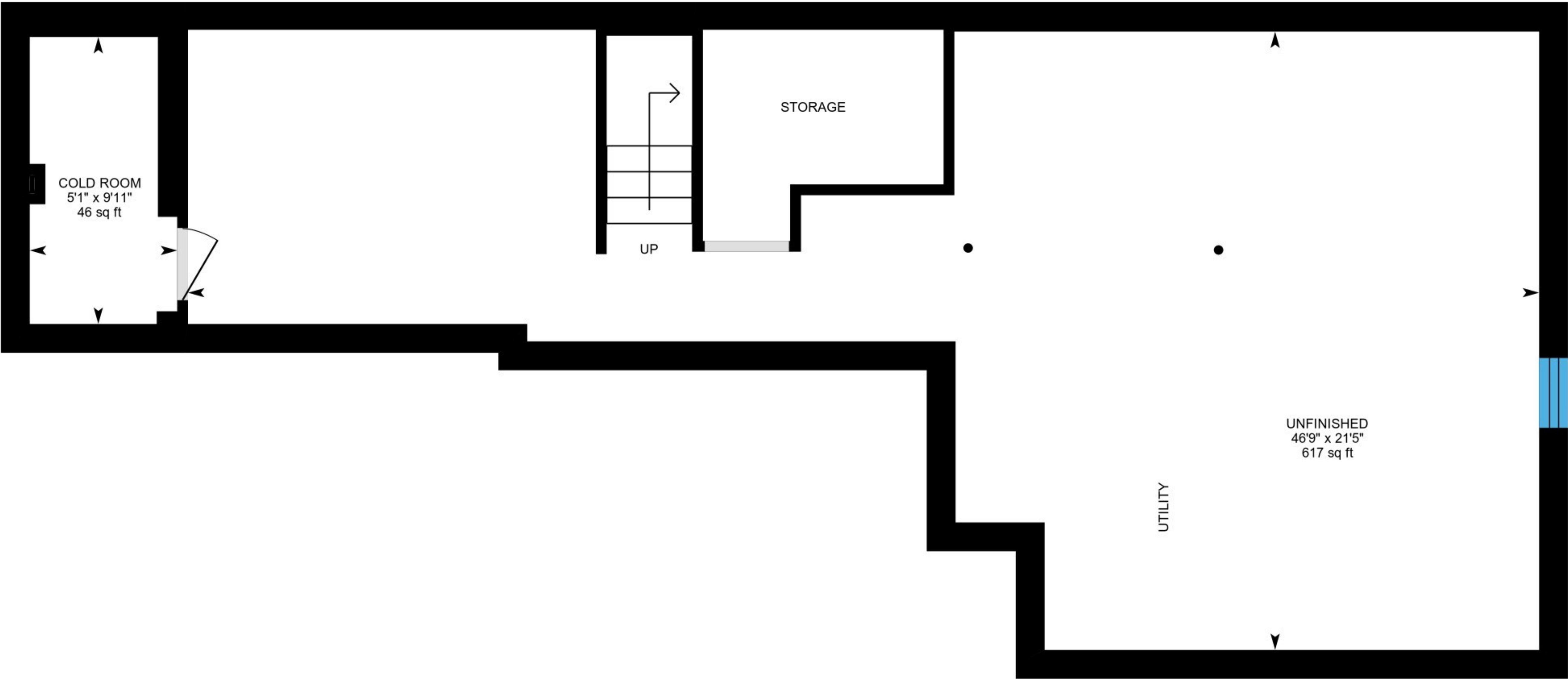
PREPARED: 2025/05/07



White regions are excluded from total floor area in iGUIDE floor plans. All room dimensions and floor areas must be considered approximate and are subject to independent verification.

1456 Haws Crescent, Milton, ON

Basement (Below Grade) Unfinished Area 901.78 sq ft



PREPARED: 2025/05/07



White regions are excluded from total floor area in iGUIDE floor plans. All room dimensions and floor areas must be considered approximate and are subject to independent verification.