

311 Malick St, Milton, ON

Main Floor Finished Area 1098.14 sq ft



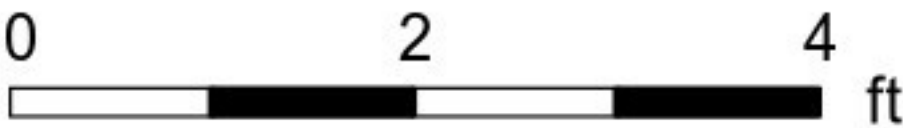
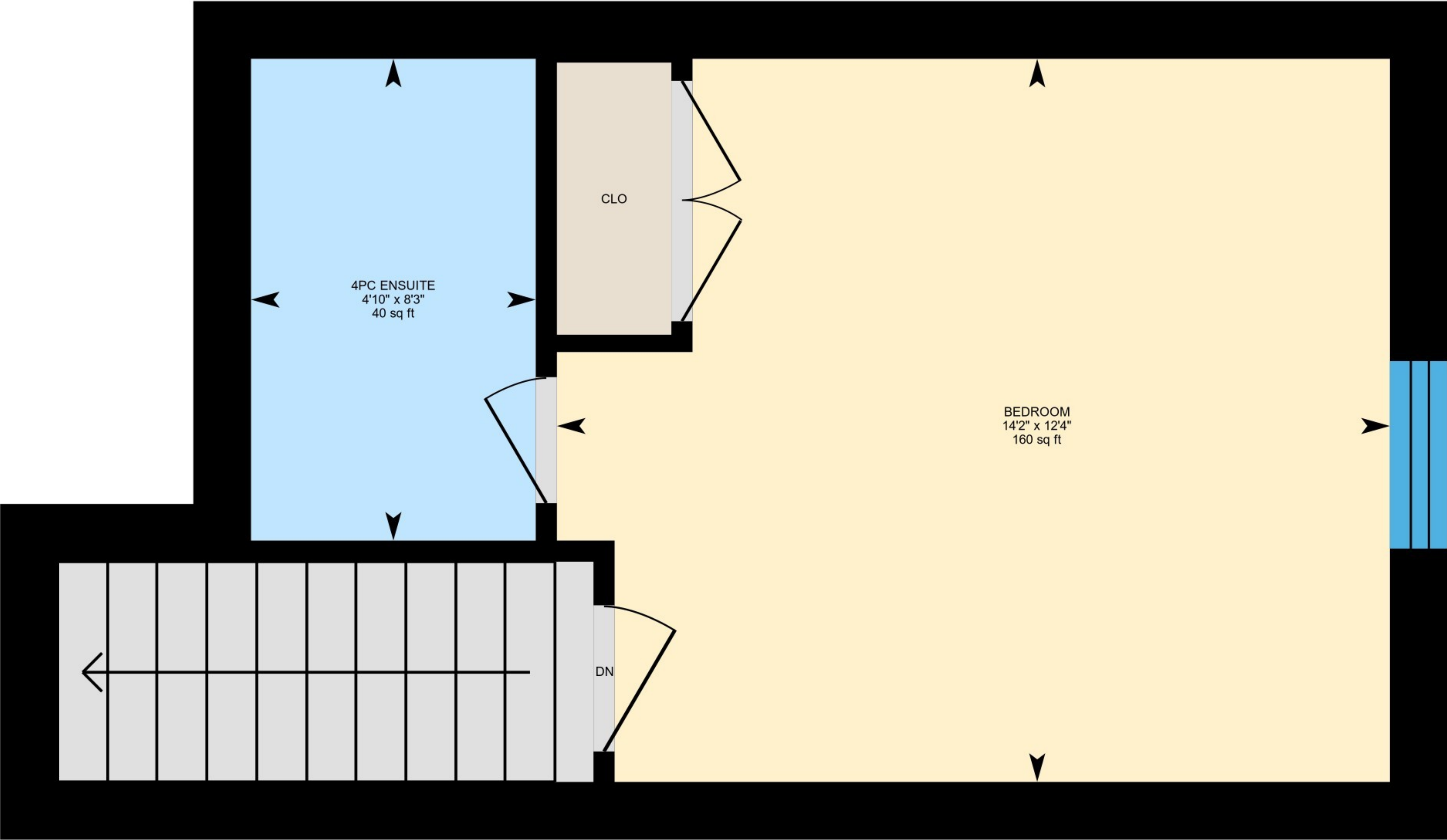
PREPARED: 2025/06/24



White regions are excluded from total floor area in iGUIDE floor plans. All room dimensions and floor areas must be considered approximate and are subject to independent verification.

311 Malick St, Milton, ON

2nd Floor    Finished Area 324.80 sq ft



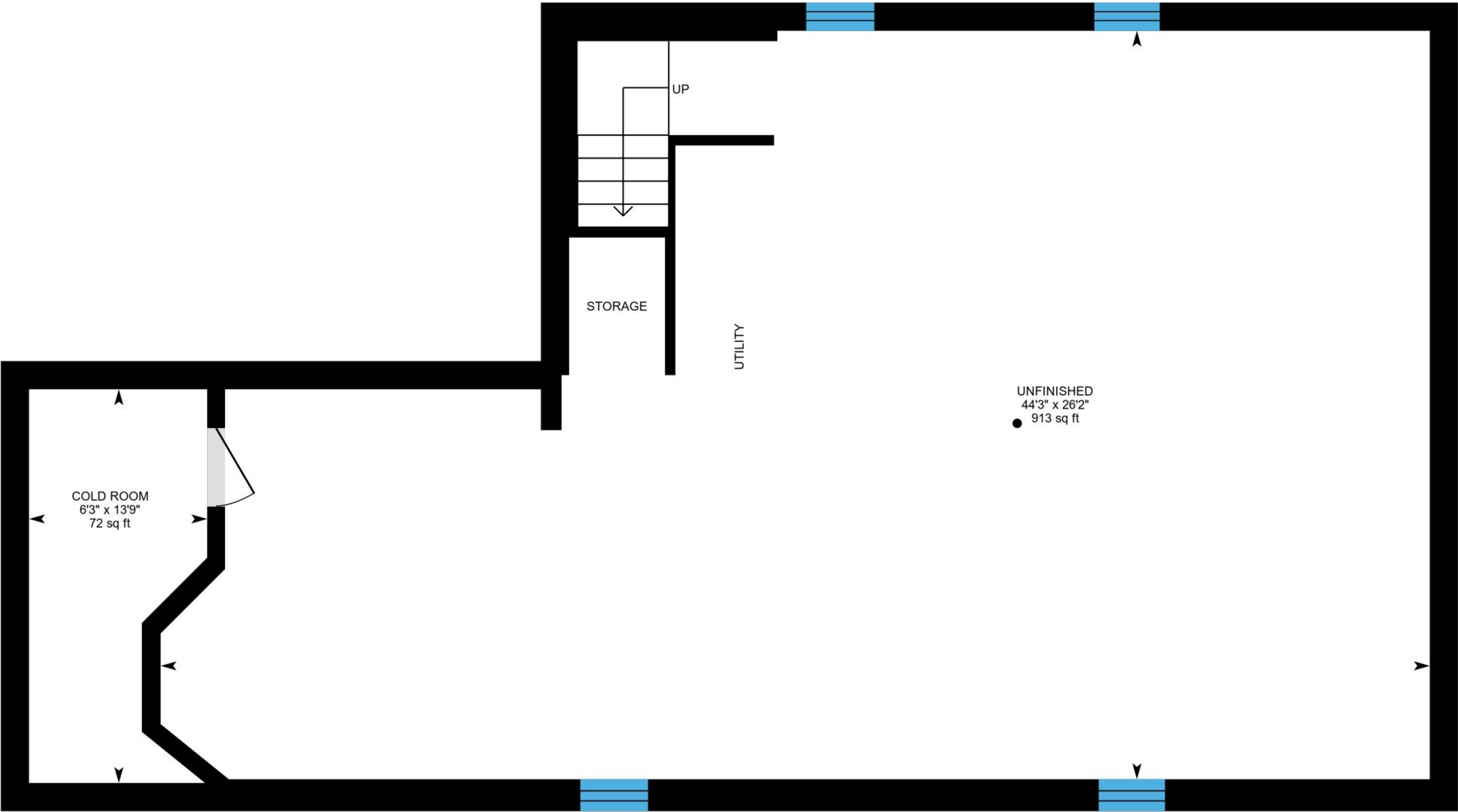
PREPARED: 2025/06/24



White regions are excluded from total floor area in iGUIDE floor plans. All room dimensions and floor areas must be considered approximate and are subject to independent verification.

311 Malick St, Milton, ON

Basement (Below Grade)    Unfinished Area 1189.91 sq ft



PREPARED: 2025/06/24

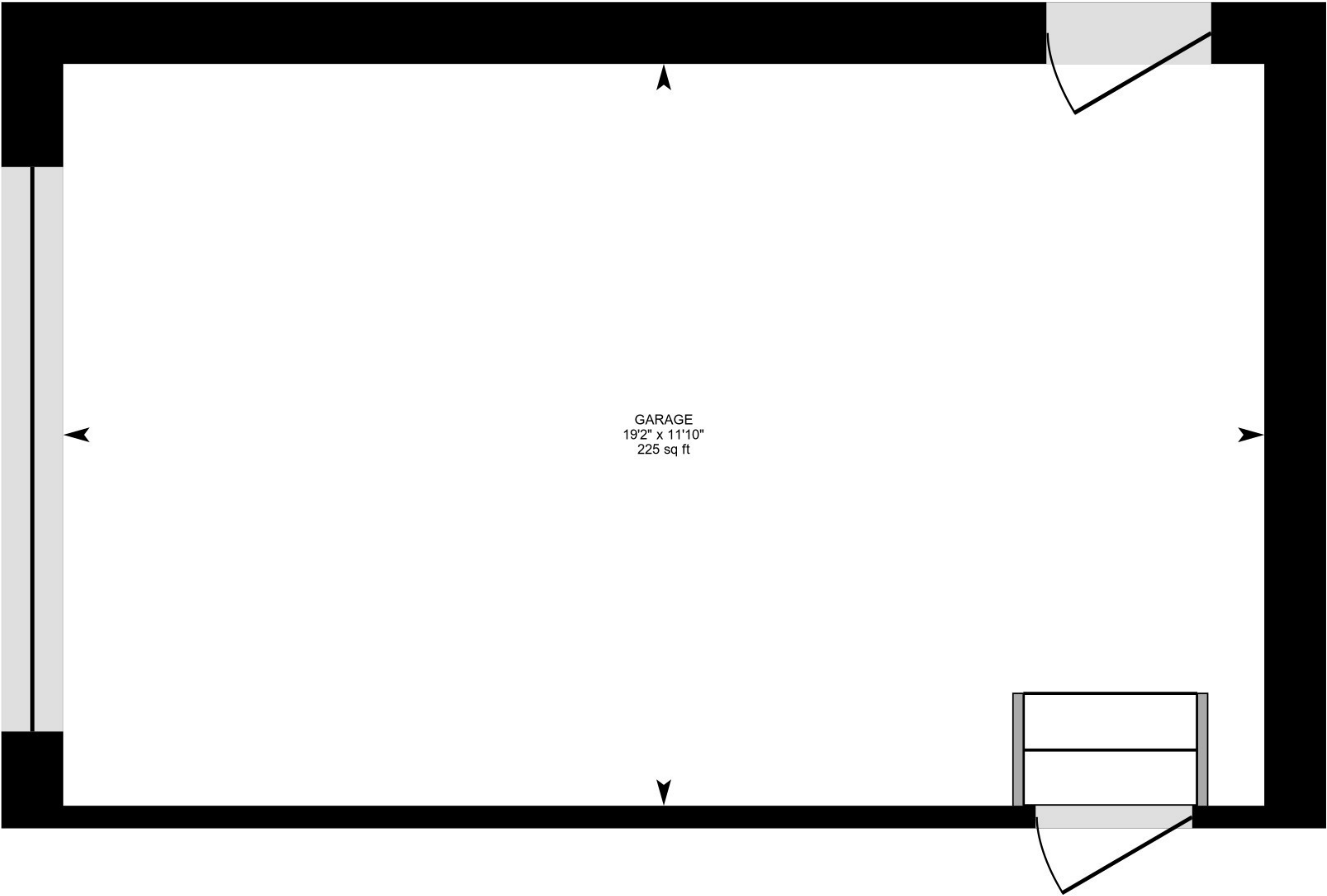


White regions are excluded from total floor area in iGUIDE floor plans. All room dimensions and floor areas must be considered approximate and are subject to independent verification.



311 Malick St, Milton, ON

Garage Unfinished Area 290.08 sq ft



PREPARED: 2025/06/24



White regions are excluded from total floor area in iGUIDE floor plans. All room dimensions and floor areas must be considered approximate and are subject to independent verification.